

The County of Santa Cruz Integrated Community Health Center Commission

AGENDA

March 9th, 2016 @ 12:30 pm

Meeting Location:

1080 Emeline Avenue, Small Auditorium (basement)
Santa Cruz, CA 95060

ORAL COMMUNICATIONS - Any person may address the Commission during its Oral Communications period. Presentations must not exceed three (3) minutes in length, and individuals may speak only once during Oral Communications. All Oral Communications must be directed to an item not listed on today's Agenda, and must be within the jurisdiction of the Commission. Commission members will not take actions or respond immediately to any Oral Communications presented, but may choose to follow up at a later time, either individually, or on a subsequent Commission Agenda.

Welcome and Introductions

1. Welcome/Introductions
2. Oral Communications
3. Review and Accept February 10th, 2016 Meeting Minutes
4. Budget/Financial Update
5. Quality Management
6. HPHP Update
7. CEO Update

Action Items from Previous Meetings:

Action Item	Person(s) Responsible	Date Completed	Comments
HPHP Building Mold Report	Amy Peeler	3/9/2016	

Next meeting: Wednesday, April 13th 12:30 pm-2:30 pm (small auditorium, 1080 Emeline, Santa Cruz, CA)

The County of Santa Cruz Integrated Community Health Center Commission

Minute Taker: Kristina Riera

Minutes of the meeting held *Wednesday, February 10th, 2016*

1. Attendance	
Rahn Garcia	Co-Chair
Pamela Hammond	Member
Raquel Ramirez-Ruiz	Member
Nicole Pfeil	Member
Christina Berberich	Member
Sam Gordon	Member
Dr. George Wolfe	Member
Amy Peeler	County of Santa Cruz, Health Services, CEO of Clinics
Michael Beaton	County of Santa Cruz, Health Services, Director of Administrative Services
Kristina Riera	County of Santa Cruz, Health Services, Analyst
Nikki Yates	County of Santa Cruz, Health Services, Accountant III
Christine Williams	County of Santa Cruz, Health Services, Administrative Services Manager
Joey Crottogini	County of Santa Cruz, Health Services, HPHP Health Center Manager
Jessica McElveny	County of Santa Cruz, Health Services, Administrative Aide
Meeting Commenced at 12:35 pm and concluded at 2:12 pm	
2. Apologies/Absent	
Apologies were noted from: Kristen Meyer and Rama Khalsa Absent: Fernando Alcantar and Gustavo Mendoza	
3. Oral Communications	
4. Review of January 13, 2016 minutes	
Rahn motioned for the acceptance of the minutes, the motion was seconded by Dr. Wolfe. The rest of the members present were in favour.	
5. Alliance Care Based Incentive Program	
Dr. Dale Bishop did a presentation on the Alliance Care Based Incentive Program (CBI).	
6. Budget/Financial Update	
Nikki Yates, Accountant III, provided a budget/financial update. Amy presented the information on total MediCal patient's County wide vs MediCal patients seen by the clinic.	
7. Health Homes Update	
Amy Peeler, CEO, provided Health Homes Update.	
8. Quality Management	
Amy Peeler, CEO provided a status update on the Quality Management.	
9. CEO Update	
Amy Peeler, CEO provided an update.	
Action Item 1: Provide mold test report for HPHP Building.	Amy Peeler

Next Meeting: *Wednesday, March 9th at 12:30 pm at 1080 Emeline Ave, Santa Cruz, CA*



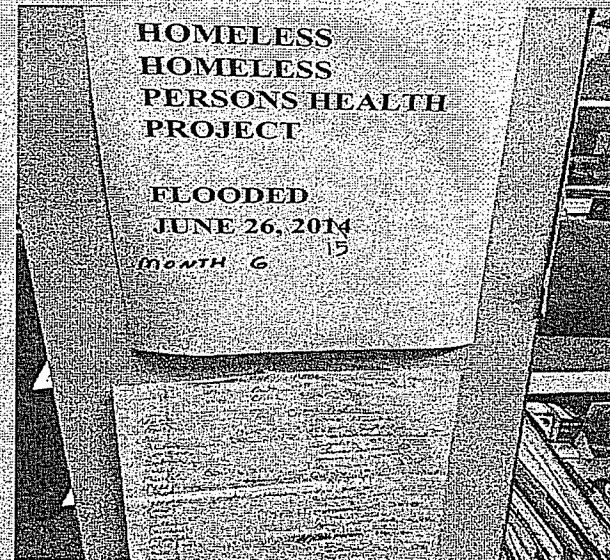
HOMELESS PERSONS HEALTH PROJECT FLOOD REPAIR

COUNTY OF SANTA CRUZ, INTEGRATED COMMUNITY HEALTH CENTER COMMISSION

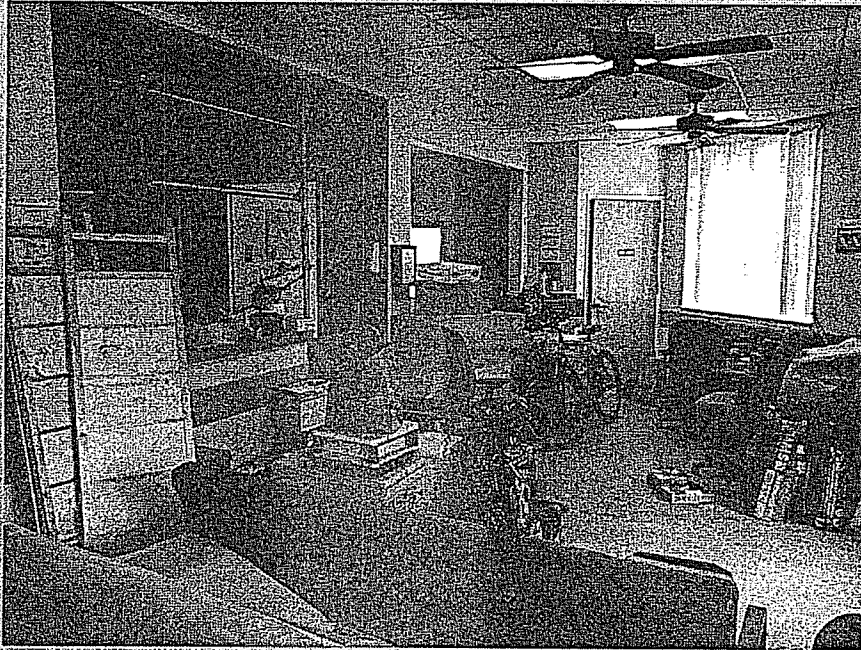
JOSEPH CROTTOGINI, HPHP HEALTH CENTER MANAGER

TIMELINE OF EVENTS

1. JUNE 26TH, 2015 – SPRINKLER SET OFF ON THIRD FLOOR OF HSC, FLOODING SECOND AND FIRST FLOOR OF HPHP
2. HPHP OPERATES OUT OF ADMIN AREA AND 10X42' MODSPACE TRAILER
3. MONTHS PASS AS INSURANCE CLAIMS ARE NEGOTIATED



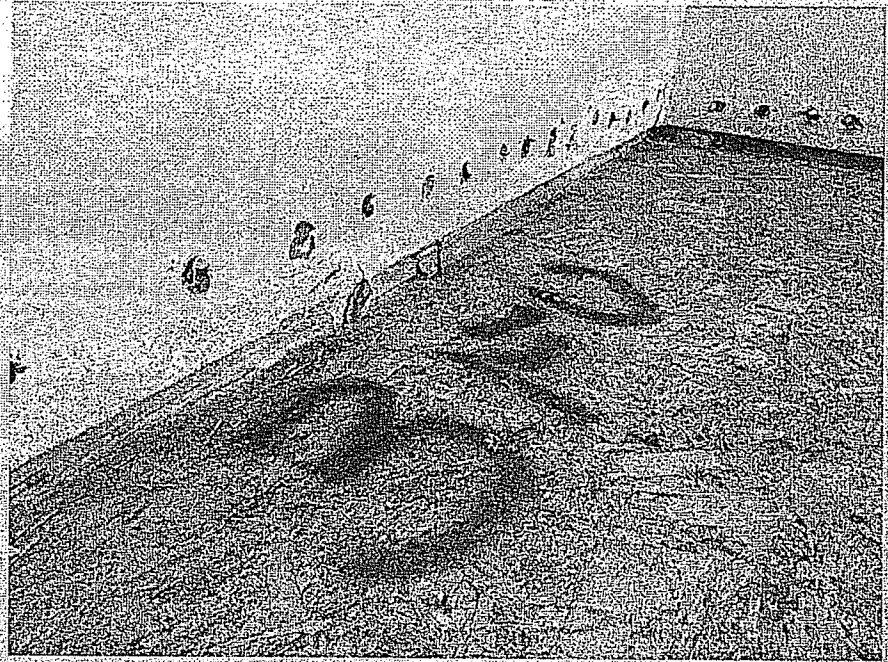
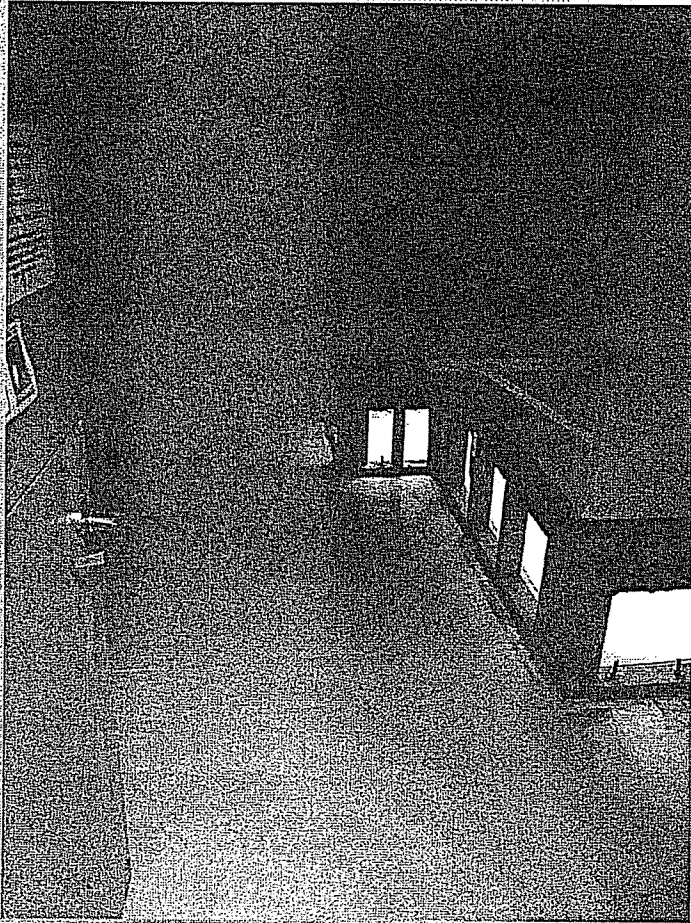
1ST DAY ON THE JOB, JANUARY 4TH, 2016



- JANUARY 20TH, 2016 – EMERGENCY MEETING REGARDING HPHP CLINIC REPAIR
- **HOMELESS SERVICE CENTER PROJECT MANAGER ESTIMATES JUNE 2016 REPAIR COMPLETION**
- FEBRUARY 2016 – SECOND MODSPACE REQUESTED BY HPHP HEALTH CENTER MANAGER
- FEBRUARY 22, 2016 HSA SAFETY OFFICER JOSHUA REILLY INSPECTS HPHP FOR MOLD
- FEBRUARY 23, 2016 – HPHP TEAM RECEIVES HEALTH SERVICES SILVER AWARD FROM BOARD OF SUPERVISORS
- MARCH 3RD, 2016 – CITY OF SANTA CRUZ APPROVES BUILDING PLANS

NO MOLD FOUND





IMPACT OF 6/26/2015 FLOOD ON CLINIC

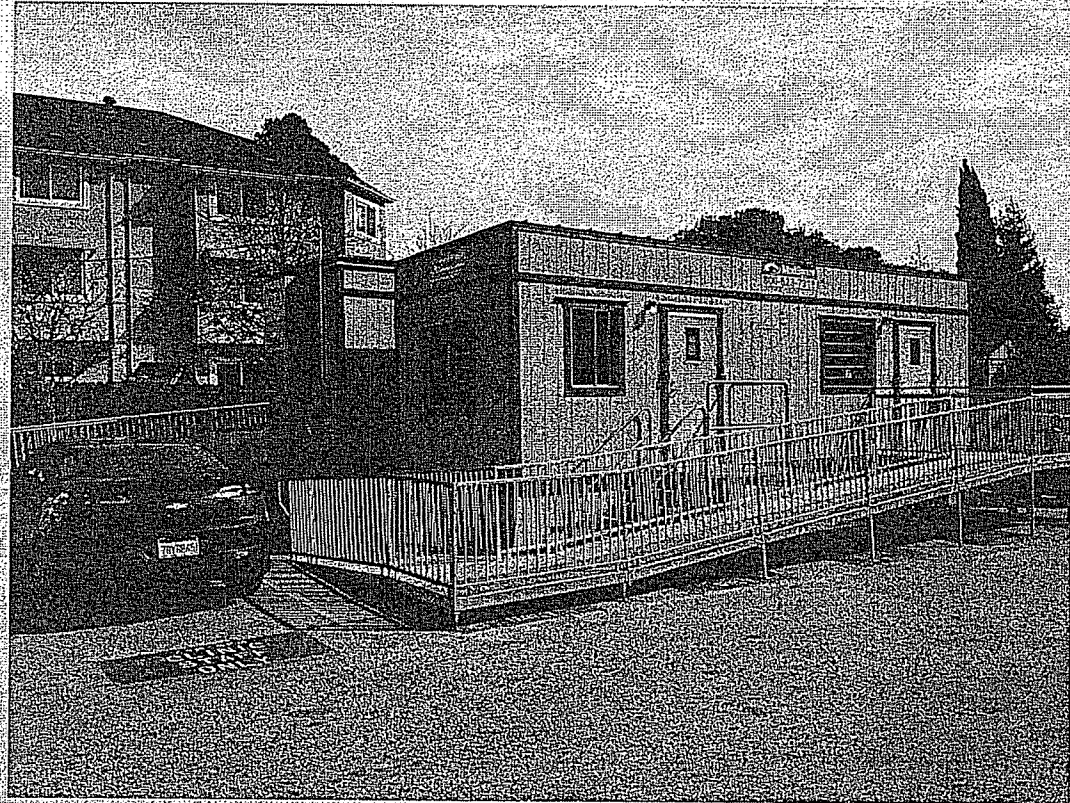
Yr	Mo	FQVisits	NonFQVisits	FQpts	NonFQpts
2014	1	379	572	301	352
2014	2	327	508	270	304
2014	3	329	500	265	334
2014	4	373	636	302	356
2014	5	329	587	269	347
2014	6	327	523	268	286
2014	7	319	560	260	276
2014	8	293	445	235	243
2014	9	284	445	229	239
2014	10	317	485	229	253
2014	11	242	418	202	244
2014	12	218	483	178	301

Yr	Mo	FQVisits	NonFQVisits	FQpts	NonFQpts
2015	1	266	659	204	355
2015	2	281	535	231	312
2015	3	314	545	246	293
2015	4	292	530	229	273
2015	5	280	512	217	297
2015	6	257	429	203	209
2015	7	216	454	166	185
2015	8	221	477	172	231
2015	9	214	360	153	207
2015	10	159	207	121	142
2015	11	153	335	127	230
2015	12	92	172	74	124

Other factors contributing to decline in patients include security gate and low staff ratios resulting from retirements.

NEXT STEPS

SECOND MODSPACE
ORDERED = LIMITED
PARKING AT HPHP



NEXT STEPS CONTINUED

- RECEIVE WEEKLY UPDATES FROM HSC RELATED TO HPHP REPAIR SCHEDULE
- HEALTH CNTR MNGR WORKING WITH HSC TO COORDINATE MOVING SUPPLIES/STORAGE, WALKTHROUGH ON 3/9 2PM
- ONCE REPAIRS START, 2-3 MONTHS UNTIL COMPLETION
- ADMIN ANALYST SCOTT MOATS AND SAFETY OFFICER JOSHUA REILLY TO ASSIST ON HSA SIDE FOR HPHP REPAIR AND MOVE IN
- UPON MOVE IN, HEALTH CNTR MNGR WILL COORDINATE WITH CCAH TO PREP FOR SITE AUDIT

County of Santa Cruz (HSA)
 FY 15-16 Clinic
 FQHC Clinic Services BY PROGRAM
 ALL CLINICS 2/29/2016

ROW LABELS	BUDGET	ACTUAL	ESTIMATED ACTUALS	VARIANCE	VARIANCE %
EXPENDITURE	37,939,922	11,813,872	27,692,092	10,247,830	27%
50-SALARIES AND EMPLOYEE BENEF	16,045,500	8,721,055	13,742,124	2,303,376	6%
60-SERVICES AND SUPPLIES	6,100,969	2,153,275	5,612,900	488,069	1%
70-OTHER CHARGES	1,713,921	1,058,857	1,713,952	(31)	0%
80-FIXED ASSETS	100,000	19,190	108,753	(8,753)	-0.02%
95-INTRAFUND TRANSFERS	13,979,532	(138,507)	6,514,363	7,465,169	20%
REVENUE	(35,150,523)	(13,521,217)	(24,902,693)	(10,247,830)	-27%
15-INTERGOVERNMENTAL REVENUES	(2,633,768)	(1,334,161)	(2,319,673)	(314,095)	-1%
19-CHARGES FOR SERVICES	(31,928,610)	(12,120,383)	(22,295,248)	(9,633,362)	-25%
23-MISC. REVENUES	(588,145)	(66,861)	(287,772)	(300,373)	-1%
 TOTAL BOTTOM LINE		2,789,399	(1,707,345)	2,789,399	0

County of Santa Cruz (HSA)
 FY 15-16 Clinic
 FQHC Clinic Services BY PROGRAM
 ALL CLINICS 2/29/2016

ROW LABELS	BUDGET	ACTUAL	ESTIMATED ACTUALS	VARIANCE	VARIANCE %
EXPENDITURE	37,939,922	11,813,872	27,692,092	10,247,830	27%
50-SALARIES AND EMPLOYEE BENEF	16,045,500	8,721,055	13,742,124	2,303,376	6%
60-SERVICES AND SUPPLIES	6,100,969	2,153,275	5,612,900	488,069	1%
70-OTHER CHARGES	1,713,921	1,058,857	1,713,952	(31)	0%
80-FIXED ASSETS	100,000	19,190	108,753	(8,753)	-0.02%
95-INTRAFUND TRANSFERS	13,979,532	(138,507)	6,514,363	7,465,169	20%
REVENUE	(35,150,523)	(13,521,217)	(24,902,693)	(10,247,830)	-27%
15-INTERGOVERNMENTAL REVENUES	(2,633,768)	(1,334,161)	(2,319,673)	(314,095)	-1%
19-CHARGES FOR SERVICES	(31,928,610)	(12,120,383)	(22,295,248)	(9,633,362)	-25%
23-MISC. REVENUES	(588,145)	(66,861)	(287,772)	(300,373)	-1%
TOTAL BOTTOM LINE		2,789,399	(1,707,345)	2,789,399	0